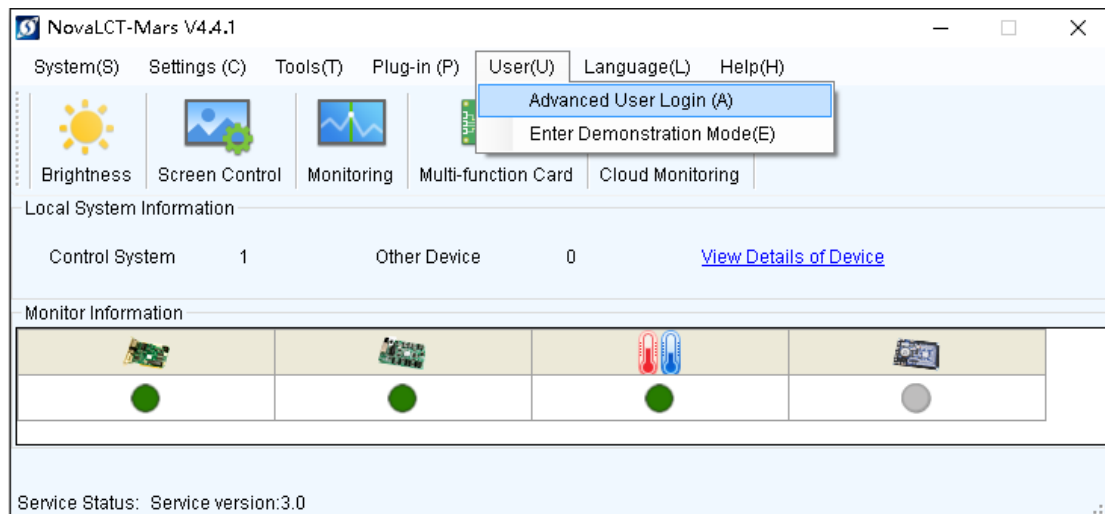
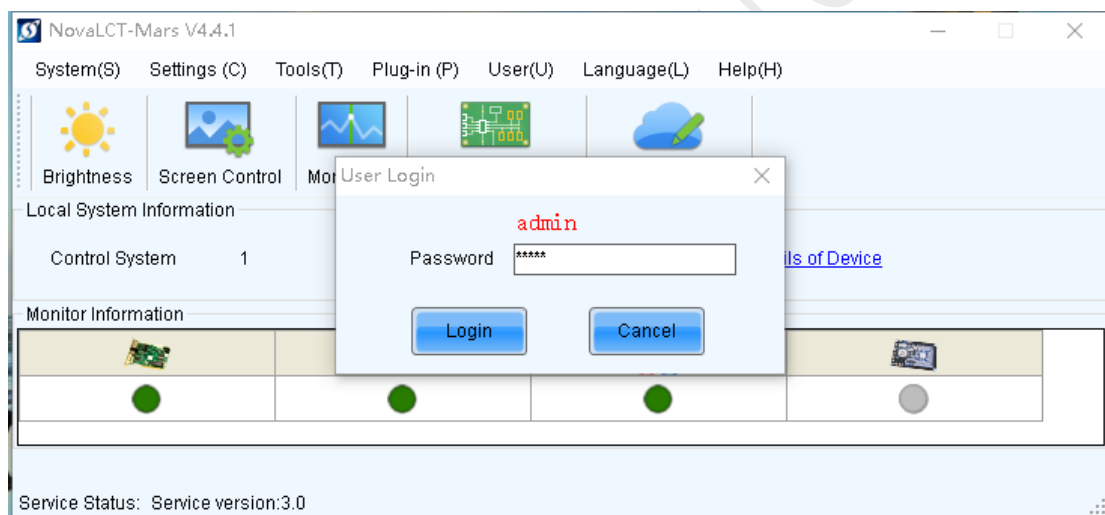


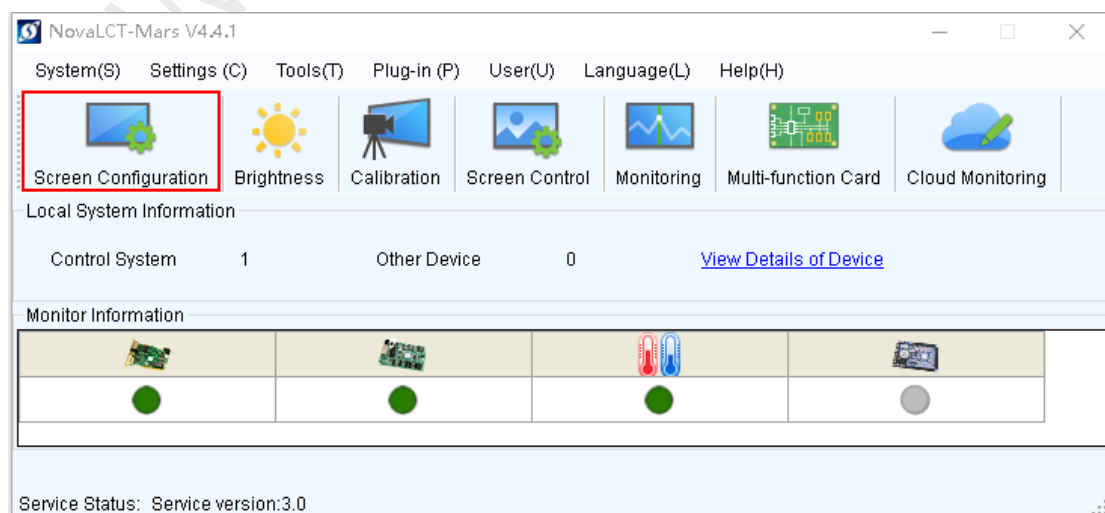
1. Run NovaLCT-Mars, move the cursor over the *Advanced User Login (A)* and click the button.



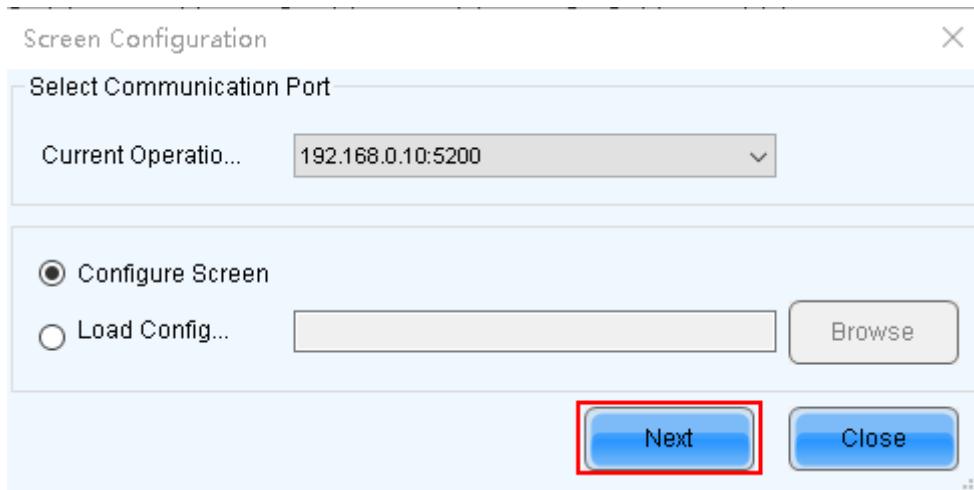
2. Login with the password "admin".



3. Click on the *Screen Configuration* button.



4. Select *Current Operation Communication Port* and go to *Next* step.



Screen Configuration

Select Communication Port

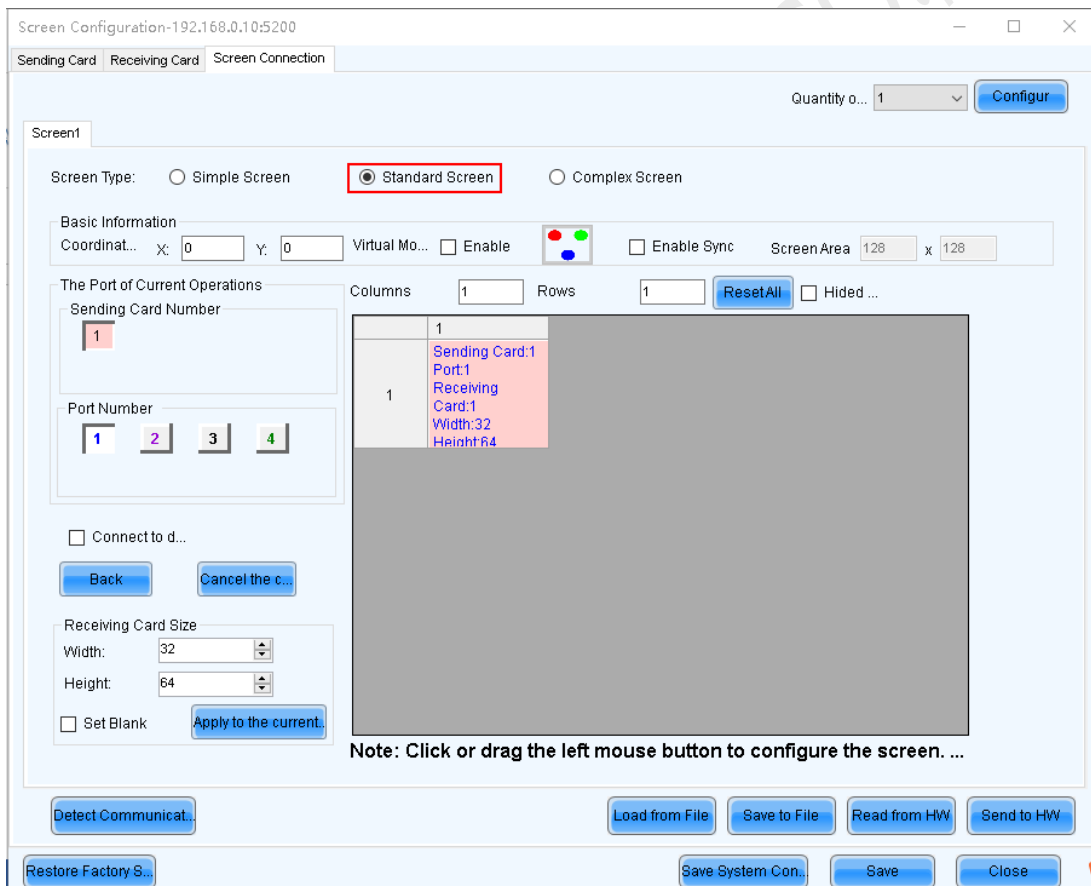
Current Operatio... 192.168.0.10:5200

☒ Configure Screen

☐ Load Config... Browse

Next Close

5. Click to select *Standard Screen* on the *Screen Connection* page.



Screen Configuration-192.168.0.10:5200

Sending Card Receiving Card Screen Connection

Quantity o... 1 Configur

Screen1

Screen Type: ☐ Simple Screen ☒ Standard Screen ☐ Complex Screen

Basic Information

Coordinat... X: 0 Y: 0 Virtual Mo... ☐ Enable ☐ Enable Sync Screen Area 128 x 128

The Port of Current Operations

Sending Card Number 1

Port Number 1 2 3 4

☐ Connect to d...

Back Cancel the c...

Receiving Card Size

Width: 32 Height: 64

☐ Set Blank Apply to the current.

Columns 1 Rows 1 ResetAll Hided ...

1 Sending Card:1 Port:1 Receiving Card:1 Width:32 Height:64

Note: Click or drag the left mouse button to configure the screen. ...

Detect Communicat...

Load from File Save to File Read from HW Send to HW

Restore Factory S... Save System Con... Save Close

6. Input the Receiving Card amount in *Columns* and *Rows*.

Screen Configuration-192.168.0.10:5200

Sending Card Receiving Card Screen Connection

Quantity o... 1 **Configure**

Screen1

Screen Type: ☐ Simple Screen ☒ Standard Screen ☐ Complex Screen

Basic Information
 Coordinat... X: 0 Y: 0 Virtual Mo... ☐ Enable ☐ Enable Sync Screen Area 128 x 128

The Port of Current Operations
 Sending Card Number 1
 Port Number 1 2 3 4
☐ Connect to d...
Back **Cancel the c...**

Receiving Card Size
 Width: 32
 Height: 64
☐ Set Blank **Apply to the current...**

Columns 3 Rows 3 **ResetAll** ☐ Hided ...

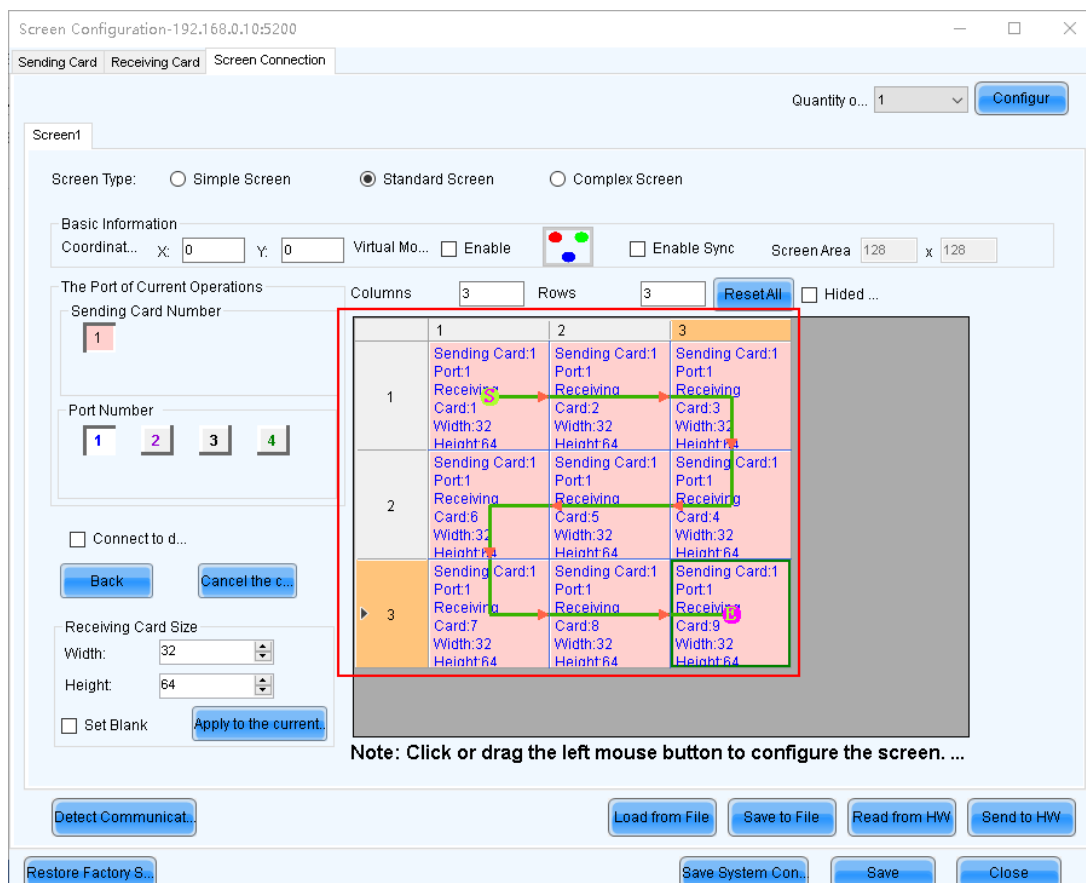
	1	2	3
1	Sending Card:1 Port:1 Receiving Card:1 Width:32 Height:64	Sending Card: Port: Receiving Card: Width:0 Height:0	Sending Card: Port: Receiving Card: Width:0 Height:0
2	Sending Card: Port: Receiving Card: Width:0 Height:0	Sending Card: Port: Receiving Card: Width:0 Height:0	Sending Card: Port: Receiving Card: Width:0 Height:0
3	Sending Card: Port: Receiving Card: Width:0 Height:0	Sending Card: Port: Receiving Card: Width:0 Height:0	Sending Card: Port: Receiving Card: Width:0 Height:0

Note: Click or drag the left mouse button to configure the screen. ...

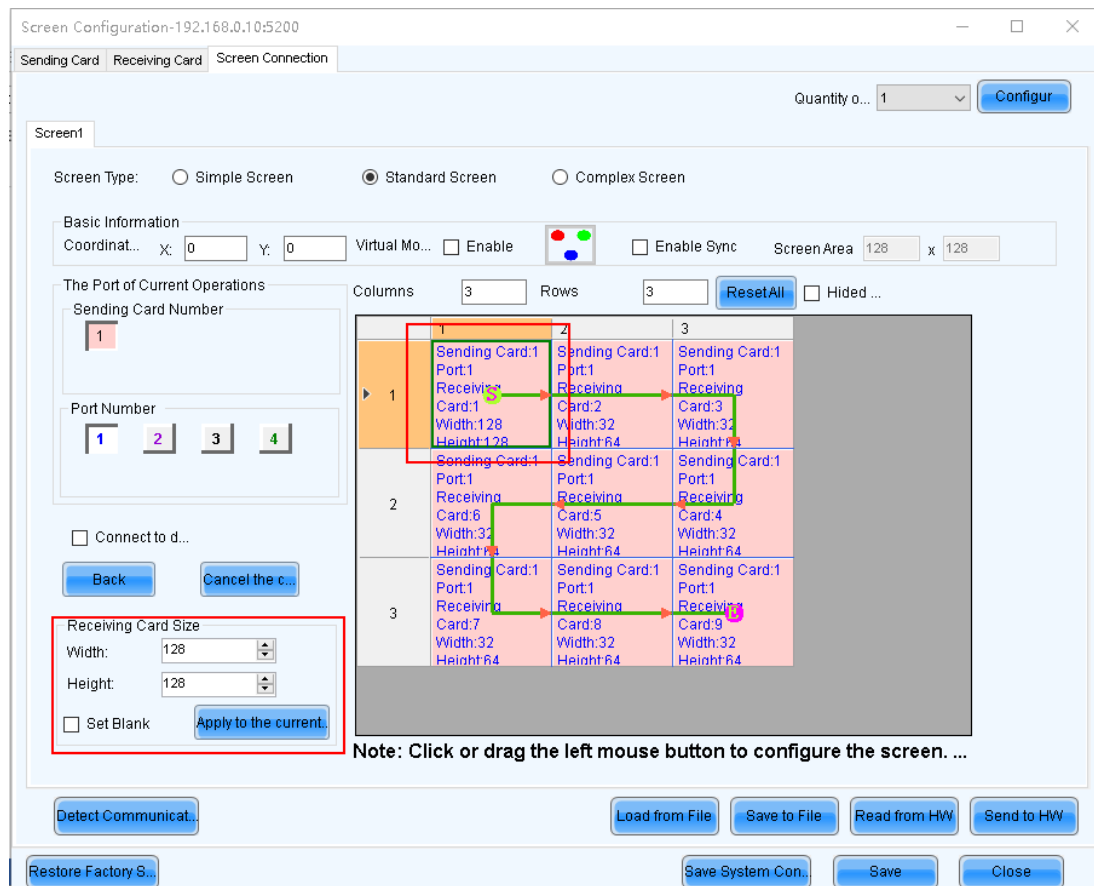
Detect Communicat... **Load from File** **Save to File** **Read from HW** **Send to HW**

Restore Factory S... **Save System Con...** **Save** **Close**

- To connect all the Receiving Cards to each other, press left button and move over each receiving card one by one to draw a connection line, which should be exactly same with the physical connection. Note that the connection diagram is designed to assume looking at the front of the LED screen.



8. Click to select a Sending Card, at the *Receiving Card Size* part you can adjust the resolution of the Receiving Card. Obviously you can adjust the resolution of all Receiving Cards and even set their resolution different from each other.



9. Click to *Send to HW* and *Save* to finish the setting.

